



*Innovators of Freight Securement Systems®*

# Wedge XL®

The one-way solution for securing medium weight loads.

## Installation Guide



The complete Installation Guide for Logistick's Wedge XL®.

For best results, please read through all instructions prior to installation.

## Materials Needed

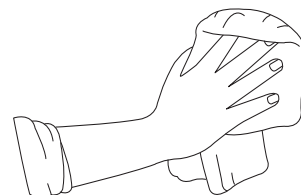
- Wedge XL®
- 4x4 (recommended) or two 2x4s
- Dry Cloth
- Saw
- Tape Measure
- Scraper (optional)
- Rubbing alcohol (optional)

### 1. Choosing the Application Area

After loading the cargo, determine the best location for installation. Keep in mind that multiple sets of Wedge XL® may be needed to safely secure your cargo. Choose an area that will place the Wedge XL® at the same height and position, assuring the beam will be installed parallel to the floor. The beam needs to be against the freight, which will prevent the cargo from starting to shift.

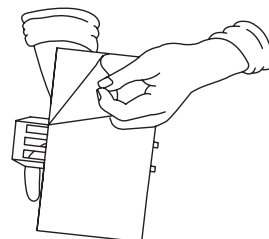
### 2. Prepping the Application Area

The entire application area must be clean and dry to ensure proper installation. Use a dry cloth, and if needed, a scraper and rubbing alcohol to remove loose dirt, dust, condensation or frost from the application area.



### 3. Adhering Wedge XL®

Remove the tape backing from one Wedge XL® and place it in the desired application area on the wall. After removing tape backing from the second Wedge XL® place it on the opposite wall at the same height and position as the first.



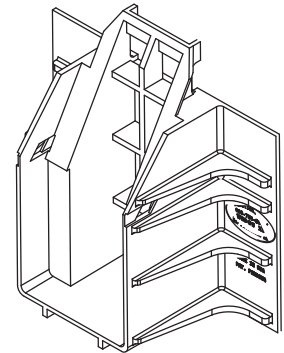
**IMPORTANT: Once Wedge XL® is installed, it cannot be repositioned.**

#### 4. Determine Size of Beam to be Used

Use either a single 4x4 (recommended) or two 2x4s (same length and nailed or screwed together), as an alternative for the 4x4. A single 2x4 is not recommended with the Wedge XL®.

Measure the inside width of the trailer at application area. **For proper fit and pressure, the wood beam needs to be on average 3 ¾ inches less than the inside width:**

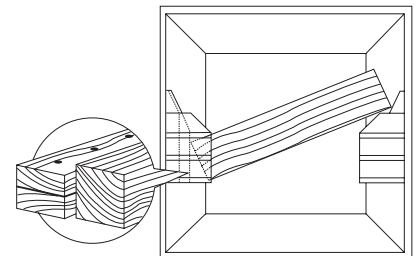
- a) For flexible areas, start with a beam **3 ½ inches** less than the inside width.
- b) For rigid areas, or installation near the doors, start with a beam **4 ½ inches** less than the inside width.



A longer beam creates more outward pressure to maximize performance.

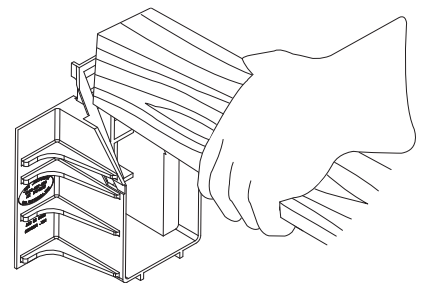
#### 5. Insert the Beam

Place one end of the 4x4 (or two 2x4s oriented horizontally) into the pocket of the first Wedge XL® and rest the opposite end of the beam at the top of the ramp on the second Wedge XL®.

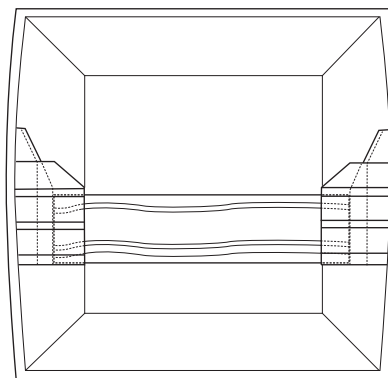


#### 6. Complete Installation

Force the beam down the ramp of the second Wedge XL® until it is under the retention clips and locked into place. If this is too difficult, trim 1/8 inch off the end of the beam and reattempt installation.



Proper installation will result in trailer walls expanding outward slightly, as shown below.

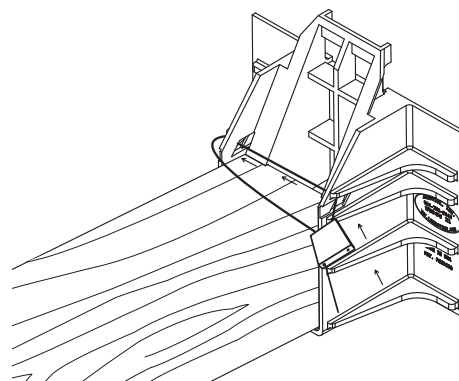


**Max outward pressure = Max performance**

## Optional Installation guide for tamper evident Security Seals. (Sold Separately)

### 7. Installing Security Seals

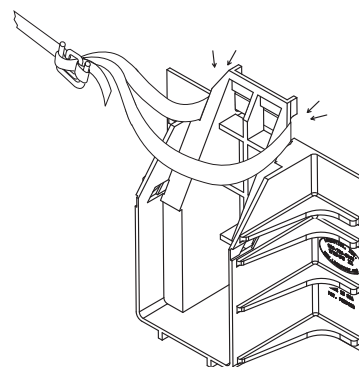
Locate the holes on the upper section of the pocket of the Wedge XL®. Run the loose seal wire through both holes and above the beam forming a complete loop, meeting at the body of the seal. Pull the loose wire through the body of the seal until it is tight and secure. Caution, once the wire has passed through the body of the seal, it's locked in place. Contact a Logistick representative for more details.



## Optional Installation guide for Strapping. (Sold Separately)

### 8. Using Banding with Wedge XL®

The top of the Wedge XL® can be used as an anchor point for ¾ inch banding. Contact a Logistick representative for more details.



If you have any questions about this product or any  
of our other products please email us at  
[sales@logistick.com](mailto:sales@logistick.com)

**Thank you for your business and  
continued partnership.**

**[Logistick.com](https://www.logistick.com)**



Scan for full video!



*Innovators of Freight Securement Systems®*

Revised October 2022  
L.21

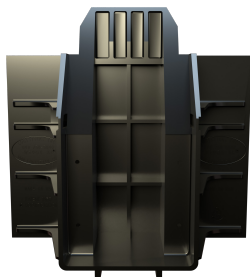


*Innovators of Freight Securement Systems®*

# Wedge XL®

The one-way solution for securing medium weight loads.

## Removal Guide



The complete Removal Guide for Logistick's Wedge XL®.

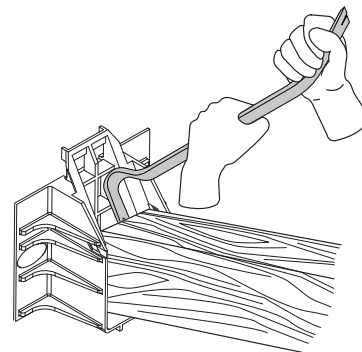
## Materials Needed

- Prybar
- Cloth (optional)
- Scraper (optional)
- Citrus Based Adhesive Remover (optional)

### 1. Removal of Beam

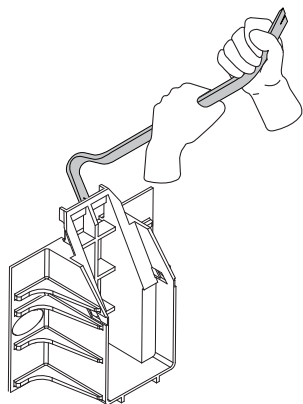
If present, remove security seals. Place a prybar down into center slot of the Wedge XL® and behind the beam. Pry the beam upward, in small increments, until it has cleared the retention clips. Use caution as the beam may eject with some force.

**Optional:** Use a forklift to slowly lift one side of the beam out of the Wedge XL® pocket. **Use caution to not damage freight.**



### 2. Removal of Wedge XL®

Place a prybar into the removal slot at the top of the Wedge XL®. Apply slow and steady outward pressure to pry Wedge XL® off the wall.



### 3. Removing Tape Remnants

Use a cloth, and if needed, a scraper and a citrus based adhesive remover to clean any remaining tape residue from the trailer walls.



Scan for full video!



*Innovators of Freight Securement Systems®*